



Adresse / Address

Datum / Date

Kontakt / Contact

10/2013

Ledermann GmbH & Co. KG
Willi-Ledermann-Str. 1
D-72160 Horb a.N.

Tel. +49 (0) 74 51 / 93 - 0
info@leuco.com
www.leuco.com

Betreff / Subject

Seite / Page

LEUCO SmartCNC: HSK-F63 Collet chucks with internal collet nut system from 1 to 10 (1") mm, 426 E (ER 16)

01/02

Inhalt / Content

The modern 5-axis technology proves its benefit with the appropriate accessories. LEUCO offers extra-long slim collet chucks for your 5-axis aggregates. This allows to reach areas on workpieces which are hard to access with standard cutters and drill bits. Expensive extra-large special tools are often no longer necessary.

The balance quality of G 2.5 allows high RPM up to 36,000 U/min and guarantees extremely smooth running of the tools and excellent surface quality. The necessary high clamping forces are reached thanks to the patented internal Zeta® safety profile.

Thanks to the unique form fit of clamping key and clamping nut there is no danger of injury (slip off) for the operator during the clamping and unclamping process.

Machine / Application

- | CNC machines; 5-axis working centers
- | special moldings with deep cavities, i.e. manufacturing of stairs, chairs, etc.

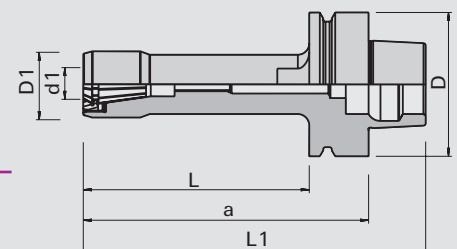
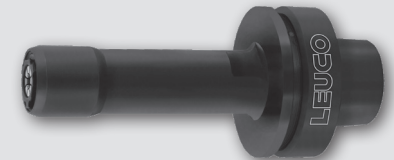
Design

- | hardened and ground with anticorrosive coating
- | internal collet nut
- | for double-slotted collets
- | balanced 36,000 RPM
- | balance quality G 2.5

Advantages

- | slim design
- | extra-long design
- | high clamping force

Bildmaterial / Imagery



HSK-F63 Collet chucks System 426 E (ER 16)

Ø d _{min}	Ø D ₁	Ø d	Ø D	L	L ₁	a	Ident-No.
1-10	29	HSK 63F	63	50	101	76	184847
1-10	29	HSK 63F	63	74	125	100	184848
1-10	29	HSK 63F	63	99	150	125	184849
1-10	29	HSK 63F	63	124	175	150	184850 o
[mm]	[mm]	[mm]	[mm]	[mm]	[mm]	[mm]	

*The draw-in collet chucks are also available for collet chucks 470 E (ER 32) see folder 839461 and 462 E (OZ 25) see folder 839463.

LEUCO

www.leuco.com



Adresse / Address

Datum / Date

10/2013

Kontakt / Contact

Ledermann GmbH & Co. KG
Willi-Ledermann-Str. 1
D-72160 Horb a.N.

Tel. +49 (0) 74 51 / 93 - 0
info@leuco.com
www.leuco.com

Betreff / Subject

LEUCO SmartCNC: HSK-F63 Collet chucks with internal collet nut system from 1 to 10 mm, 426 E (ER 16)

Seite / Page

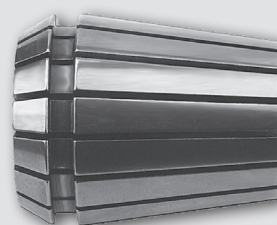
02/02

Inhalt / Content

Collet chucks System 426 E (ER 16)

D	L	d	Ident-No.	
17.25	27.5	1	184865	s
17.25	27.5	2	184866	s
17.25	27.5	3	184867	s
17.25	27.5	4	184868	s
17.25	27.5	5	184869	s
17.25	27.5	6	184870	
17.25	27.5	7	184871	s
17.25	27.5	8	184872	
17.25	27.5	9	184873	s
17.25	27.5	10	184874	
[mm]	[mm]	[mm]		

Bildmaterial / Imagery



Accessories / Mounting Devices / Spare parts

Product	For type	Ident-No.
[a] Collet nut	426E / ER 16	184875
[b] Hand spanner	426E / ER 16	184878
[c] Screw-in aid	426E / ER 16	184881
[d] Torque nut	426E / ER 16	184884
[e] Torque adapter	426E / ER 16	184887
Torque wrench 20-200Nm	426E / ER 16	184890

[a]



[b]



[c]



[d]



[e]

